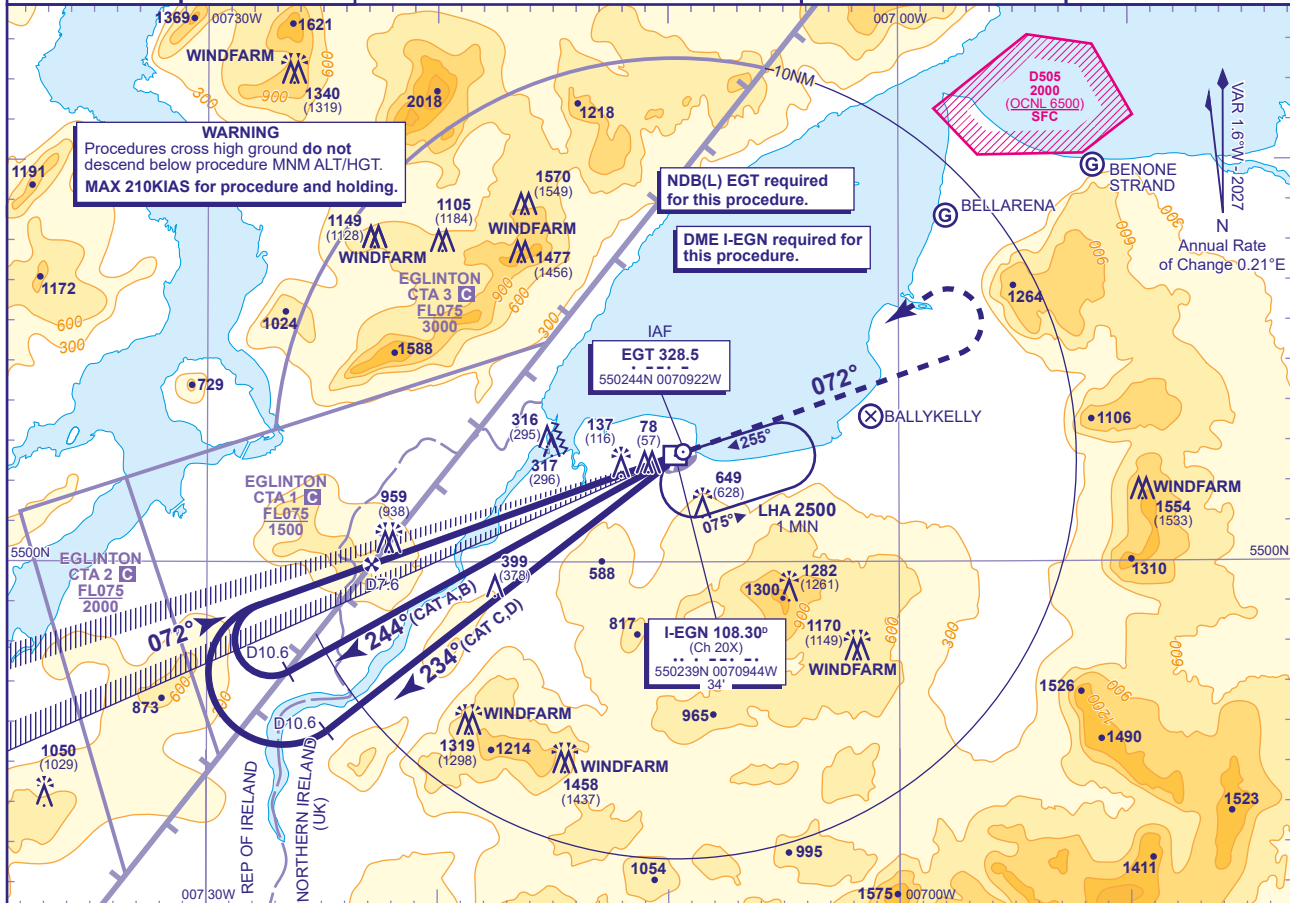


APP	123.630	EGLINTON APPROACH	AD ELEVATION	23
TWR	134.155	EGLINTON TOWER	THR ELEVATION	21
ATIS	119.380	EGLINTON INFORMATION	OBSTACLE ELEVATION	
			1570 AMSL (1549) (ABOVE THR)	
			BEARINGS ARE MAGNETIC	

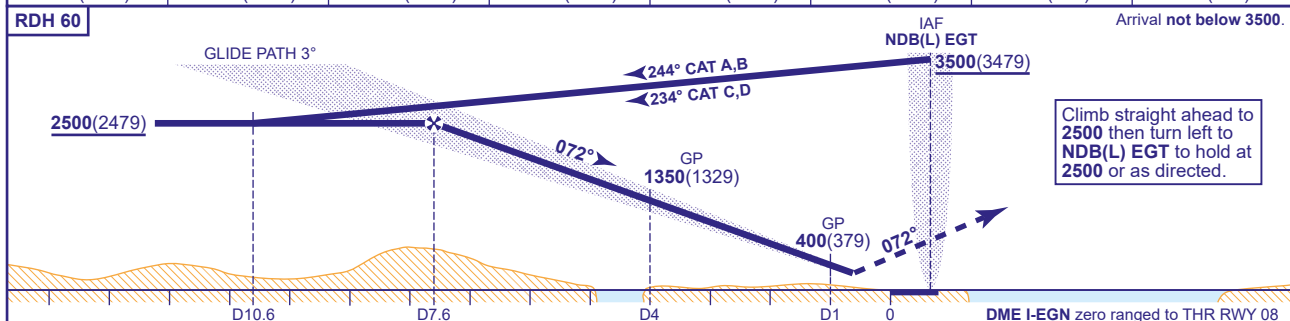
ILS/DME Z	ILS/DME Z
(Offset LOC)	(Offset LOC)
RWY 08	RWY 08
(ACFT CAT A,B,C,D)	(ACFT CAT A,B,C,D)
TRANSITION ALTITUDE	TRANSITION ALTITUDE
3000	3000



RECOMMENDED PROFILE GLIDE PATH 3.0°, 318FT/NM

DME I-EGN	7	6	5	4	3	2	1
ALT(HGT)	2310(2289)	1990(1969)	1670(1649)	1350(1329)	1040(1019)	720(699)	400(379)

Arrival not below 3500.



Aircraft Category		A	B	C	D	Rate of descent	G/S KT	160	140	120	100	80
OCA (OCH)	CAT I	293(272)	293(272)	293(272)	293(272)		FT/MIN	850	740	640	530	420
VM(C)OCA (OCH AAL)	Total Area	950(927)	950(927)	1740(1717)	1740(1717)							
	North of RWY 08/26	430(407)	580(557)	720(697)	1090(1067)							

**NOTES**

- 1 Lowest altitude to commence procedure from hold is **2500**.
- 2 LOC offset 2.7° from RWY 08 C/L.
- 3 DME not usable below **3500** between 140° and 185° due to terrain effects.
- 4 Aircraft are permitted to enter the Eglinton CTA areas whilst using these procedures and under the control of Eglinton ATC.

**CHANGE (2/26):** APP FREQUENCY. MAG VAR. MAG TRACKS.